

Westbury UFSD Legislative Budget Committee Feb 14, 2017

Greetings Legislators: Joint Legislative Budget Education Hearing Testimony by Dr. Mary Lagnado

All goals of the Westbury UFSD are focused on educational achievement. One goal achieved this past year is that 89% of our African American students graduated in the four year cohort – as compared to 68% statewide (Chart 1). Additionally 84% of all our graduating students were college and career ready. Now we have a dilemma that is New York State induced – the funding formula is ill-suited to declining wealth and high growth enrollment districts like Westbury UFSD. Our in-district student enrollment has increased from 4,037 in 2007 to our present 5,388. This 30% growth has been with diverse groups and with the impact of multiple fiscal variables. How do we maintain a high rate of achievement as we go forward with a constraining foundation aid formula base?

Historically free and reduced lunch applications have been the basis of determining extraordinary needs funding. In some measure extraordinary needs calculations were the proxy for poverty. One reason that we are severely underfunded is because Westbury schools are located in a pocket of poverty in the extremely wealthy County of Nassau. Let me give you three rates that portray Westbury's dilemma:

- 86% Free and Reduced Lunch applications (Prior to Community Eligibility Provision 63.4% * 1.6)
- 19.3% Title I Federal Census attribute 2015 by School District and (Chart 2)
- 8.4% Census data for (SAIPE) <https://www.census.gov/did/www/saipe/data/interactive/>

How are these above rates equalized for State Aid purposes? Last year the NYSED State Aid Committee began the process to redefine State Aid because of how the Community Eligibility Provision (CEP) of the School Breakfast and Lunch Program displaced the Free and Reduced Lunch Applications as a methodology for state aid distribution. Westbury is 100% CEP, in other words, our Direct Certification rate – a combination of SNAP (Food Stamp) recipients and Medicaid eligibility residents- define that status. It is the new definition of "poverty". This NYSED subcommittee reported to you and subsequently the Regents made a recommendation to the Governor. The most discriminatory aspects of the recommendations are in the present Governor's proposal. The present state aid runs do not reflect the dramatically increasing fiscal requirements for the economically disadvantaged student population of the Westbury UFSD. Now the Governor will use the Census Small Area Income Poverty Estimator (SAIPE) for calculating state aid distribution and freeze the base again. The Census SAIPE calculation for Nassau County is 8.4%. That means Westbury's dataset is averaged with the rest of Nassau County for fixing the Foundation Aid formula. In terms of Title I funding Westbury and New York State distribution for State Aid is not equally distributed. Westbury will not be fighting the Federal Government nor will Westbury be suing New York State even though others have suggested this path. So what are our options?

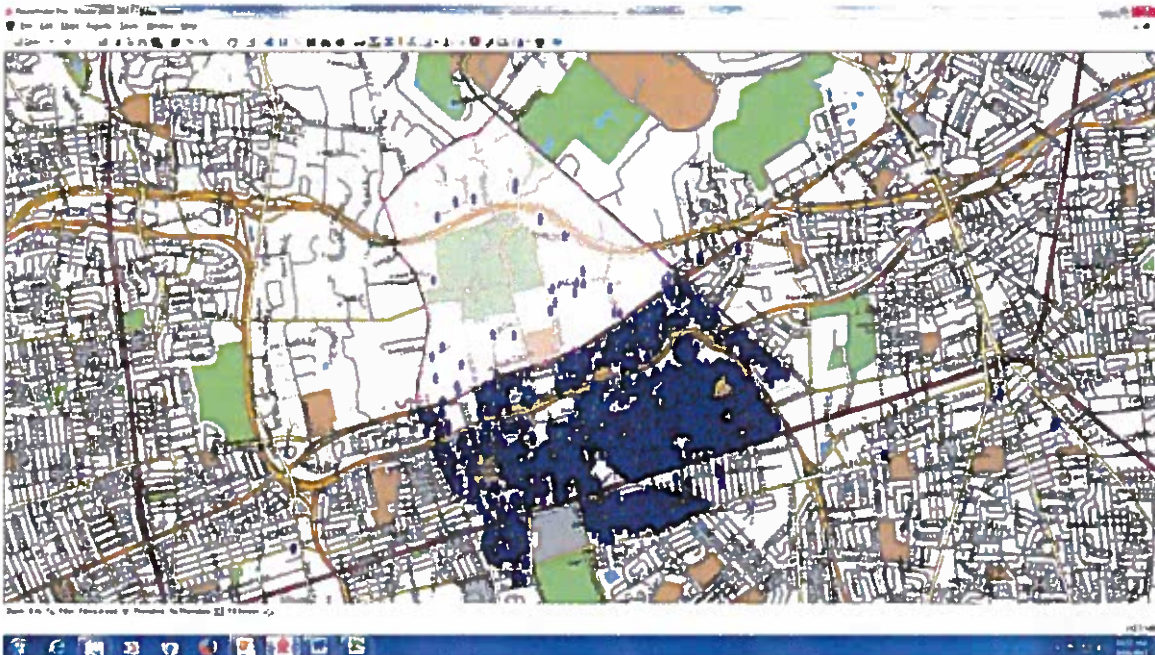
I know one factor that you look at in determining your decision for state aid distribution and that is fund balance. In other words, what are the reserves of the distribution that we use to "save" for a rainy day? Well it is pouring and the fund balance reserves have been dissipating. Westbury UFSD has been well managed. In fact, right now we have zero fiscal stress. I myself have received the Eagle Award – the ASBO National achievement for educational leadership. My team of administrators and teachers has developed a culture of learning. We have a professional learning community. Indeed, for example, more than half of our 1,084

Westbury UFSD Legislative Budget Committee Feb 14, 2017

middle school students volunteer to stay after school in various programs which is effectively an extended day program. It is a focus school. Three times in the last three years we have applied for funding for the extended day without success. Funding has been denied for zip code 11568 Old Westbury where only 58 of our 6,127 students reside; that is 25 students per square mile. But neither the State nor the Federal funding sources sees the census tracts for Westbury's New Cassel where there are 4,000 students per square mile. 99% of our in-district students are African American and Hispanic (Chart3).

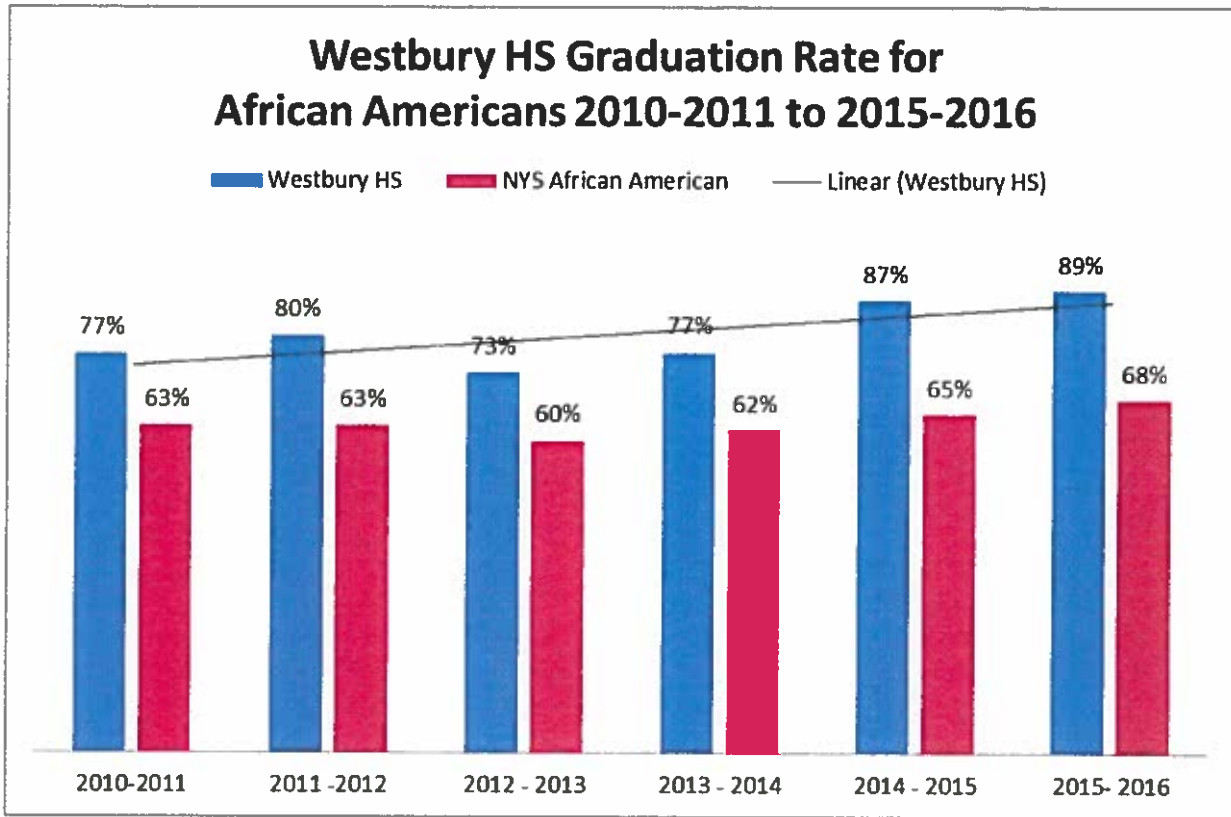
I'm sorry I got off track, back to fund balance. Because of Part 154 and other mandates we cannot downsize. Westbury is precluded from cutting our budget; we even have a directive from the Attorney General to provide specialized services. We need to plan for the long-term. We need an equitable funding base to plan for the future. Our wealthy neighbors Jericho and Carle Place foundation aid formulas are 152.6% and 71.7% respectively. Westbury has been funded at 39.7% of Phase-In Foundation Aid for the last several years and subsequently we will be out of unrestricted reserves June of 2019.

For the current Westbury budget of 2016-2017 approximately \$12 million was appropriated of which \$10 million was unrestricted fund balance and \$2 million was restricted reserves. For the 2017-2018 budget year, the Westbury UFSD will appropriate approximately \$10 million unrestricted fund balance and \$5 million of restricted reserves. By utilizing this \$15 million appropriation the June 30, 2018 unrestricted fund balance reserves will be at or about \$4 million. Effectively Westbury UFSD will have run out of unrestricted fund balance by June 2019. The only other option for Westbury will be if it is made whole by placing a floor of 55% in the Phase-In Foundation Aid formula. That would help 32 districts statewide creating a better fiscal base at the cost of \$48,463,604. If you implemented a Phase-In to 50% it would impact 14 districts at a cost of \$22,830,357 (Chart 4). Our options are defined by mandates and lack of funding. Help us to request an equitable Foundation Aid Formula that does not include such a low baseline. If a baseline is to go into effect make the basis at least 55% of the Phase-In percentage.



Westbury UFSD Legislative Budget Committee Feb 14, 2017

Chart 1: 89% of our African American students graduated in the four year cohort



Enrollment

Westbury UFSD Enrolment In-District	2007-2008	2008-2009	2009-2010	2010-2011	2011-2012	2012-2013	2013-2014	2014-2015	2015-2016	2016-2017
Pre K	295	306	300	306	306	306	306	292	292	270
K	348	342	367	376	389	387	439	405	334	354
1	347	356	370	377	389	391	396	451	420	369
2	303	332	350	352	362	372	382	446	427	422
3	295	305	334	343	347	369	374	432	421	438
4	291	302	303	330	340	363	369	352	423	425
5	277	277	313	300	330	353	364	359	354	412
6	283	276	274	314	300	332	350	357	370	353
7	297	273	262	286	314	289	319	356	353	378
8	284	290	311	269	292	301	292	355	357	349
9	254	294	316	297	272	274	431	376	423	477
10	287	267	311	317	302	286	289	350	385	412
11	255	287	260	317	320	324	286	319	340	380
12	251	259	288	279	328	322	325	346	354	349
Total	4067	4166	4359	4463	4591	4669	4922	5196	5253	5388

Westbury UFSD Legislative Budget Committee Feb 14, 2017

Chart 2: Comparison of "Poverty" in Terms of Rate

Census: Ages 5 to 17 in Families in Poverty						Rate
Year	Name	Grade	Total Population	Relevant Ages 5 to 17	Relevant Ages 5 to 17 in Families in Poverty	Relevant Ages 5 to 17 Ratio
2015	Westbury Union Free School District (NY)	PK-12	26,720	4,109	795	19.3

<https://www.census.gov/did/www/saipe/data/interactive/saipe.html>

Direct Certification

Student Enrollment	All 216 Schools	6,326	"How does 19.3% = 62.2%?"		
Student Enrollment	In-District 6 Buildings	5,371	3403*	3,403	63.4%
Standard Factor for Community Eligibility Provision and New York State					1.6
* SNAP = 1,144 Medicaid = 2,223 Homeless = 35 Migrant = 1					101.37%

(Infinite Student Database) <https://campus.westburyschools.org/campus/main.xsl>

Census: Under Age 18 in Poverty

Census: Under Age 18 in Poverty						Rate
Year	Name			Poverty Universe	Number in Poverty	Percent in Poverty
2015	United States			72,454,786	15,000,273	20.7
2015	New York			4,133,771	921,512	22.3
2015	Nassau County (NY)			292,965	24,478	8.4

<https://www.census.gov/did/www/saipe/data/interactive/saipe.html> county=36059

SAIPE uses county-wide data and not school district data to fund Title I Funds and now NYSED will use SAIPE data to distribute State Aid generally.

Westbury UFSD Legislative Budget Committee Feb 14, 2017

Chart 3: Westbury UFSD Student Enrollment Density by Zip Code

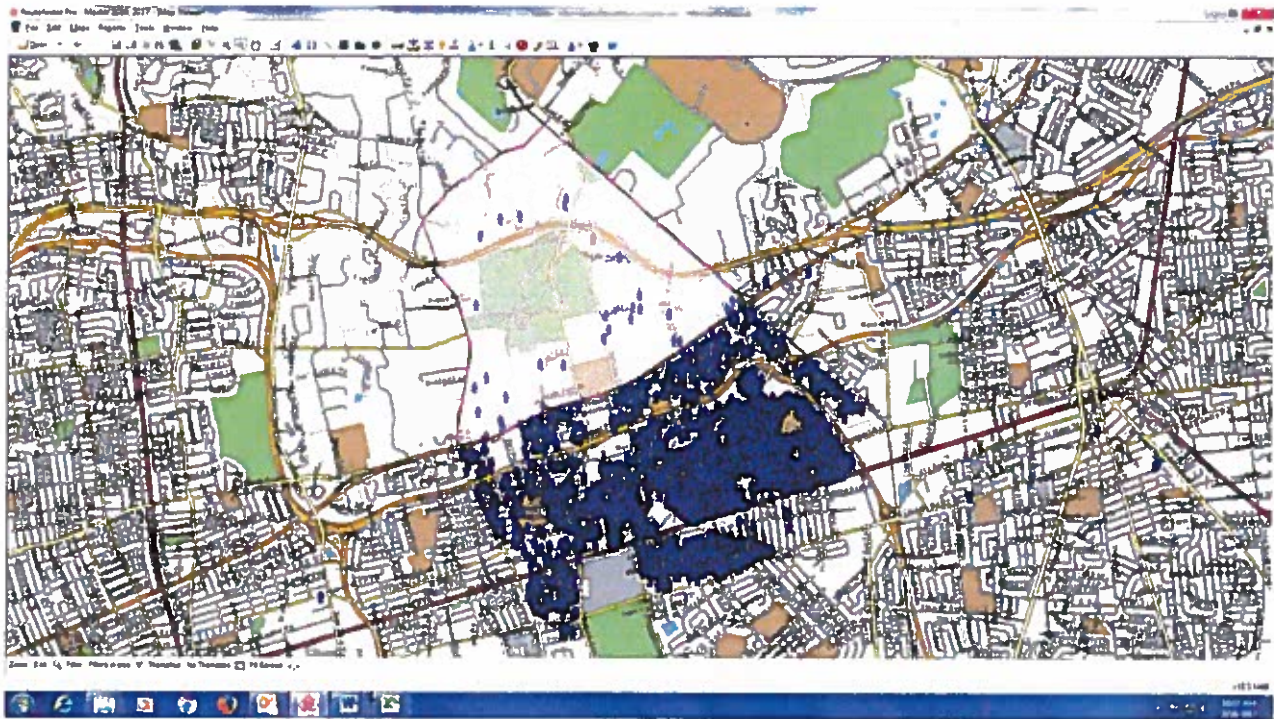


Chart 4: Phase-In to 50% it would impact 14 districts

DISTRICT	2016-17 FOUNDATION AID BEFORE PHASE-IN	2016-17 FOUNDATION AID PAYABLE	GOVERNOR'S PROPOSAL 2017-18 FOUNDATION AID	DIFFERENCE BETWEEN 2016-17 PAYABLE AND PHASE IN	DIFFERENCE BETWEEN 2017-18 GOVERNOR'S PROPOSAL & PHASE IN	DIFFERENCE BETWEEN 2017-18 GOVERNOR'S PROPOSAL & 2016-17 PAYABLE	Actual Rate	Floor Rate	Amount to 50%	Additional Aid Due
EASTCHESTER	8,100,679	2,807,578	2,890,764	(5,293,101)	(5,209,915)	83,186	34.7%	0.5	4,050,340	1,242,762
PORT CHESTER	37,255,006	13,960,925	14,696,816	(23,294,081)	(22,558,190)	735,891	37.5%	0.5	18,627,503	4,666,578
OSSINING	22,864,267	8,806,583	9,117,871	(14,057,684)	(13,746,396)	311,288	38.5%	0.5	11,432,134	2,625,551
WESTBURY	67,131,262	26,657,547	27,656,579	(40,473,715)	(39,474,683)	999,032	39.7%	0.5	33,565,631	6,908,084
RIVERHEAD	31,588,309	13,841,582	14,416,804	(17,746,727)	(17,171,505)	575,222	43.8%	0.5	15,794,155	1,952,573
HAMPTON BAYS	8,022,311	3,517,806	3,596,120	(4,504,505)	(4,426,191)	78,314	43.9%	0.5	4,011,156	493,350
BRIGHTON	14,650,480	6,455,607	6,628,261	(8,194,873)	(8,022,219)	172,654	44.1%	0.5	7,325,240	869,633
UNIONDALE	64,034,519	28,746,593	30,281,017	(35,287,926)	(33,753,502)	1,534,424	44.9%	0.5	32,017,260	3,270,667
RYE NECK	2,663,312	1,253,922	1,266,461	(1,409,390)	(1,396,851)	12,539	47.1%	0.5	1,331,656	77,734
TARRYTOWN	12,643,710	5,959,725	6,119,957	(6,683,985)	(6,523,753)	160,232	47.1%	0.5	6,321,855	362,130
NANJET	9,202,573	4,395,149	4,515,867	(4,807,424)	(4,686,706)	120,718	47.8%	0.5	4,601,287	206,138
ELMSFORD	2,959,280	1,421,907	1,441,823	(1,537,373)	(1,517,457)	19,916	48.0%	0.5	1,479,640	57,733
NEW HYDE PARK	6,349,023	3,138,974	3,221,154	(3,210,049)	(3,127,869)	82,180	49.4%	0.5	3,174,512	35,538
GLEN COVE	13,850,286	6,863,254	7,037,200	(6,987,032)	(6,813,086)	173,946	49.6%	0.5	6,925,143	61,889
										22,830,357

Westbury UFSD Legislative Budget Committee Feb 14, 2017

Chart 4 Continued: Phase-In to 55% it would impact 32 districts

DISTRICT	2016-17 FOUNDATION AID BEFORE PHASE-IN	2016-17 FOUNDATION AID PAYABLE	GOVERNOR'S PROPOSAL 2017-18 FOUNDATION AID	DIFFERENCE BETWEEN 2016-17 PAYABLE AND PHASE IN	DIFFERENCE BETWEEN 2017-18 GOVERNOR'S PROPOSAL & PHASE IN	DIFFERENCE BETWEEN 2017-18 GOVERNOR'S PROPOSAL & 2016-17 PAYABLE	Actual Rate	Floor Rate	Amount to 55%	Additional Aid Due
EASTCHESTER	8,100,679	2,807,578	2,890,764	(5,293,101)	(5,209,915)	83,186	34.7%	0.55	4,455,373	1,647,795
PORT CHESTER	37,255,006	13,960,925	14,696,816	(23,294,081)	(22,558,190)	735,891	37.5%	0.55	20,490,253	6,529,328
OSSINING	22,864,267	8,806,583	9,117,871	(14,057,684)	(13,746,396)	311,288	38.5%	0.55	12,575,347	3,768,764
WESTBURY	67,131,262	26,657,547	27,656,579	(40,473,715)	(39,474,683)	999,032	39.7%	0.55	36,922,194	10,264,647
RIVERHEAD	31,588,309	13,841,582	14,416,804	(17,746,727)	(17,171,505)	575,222	43.8%	0.55	17,373,570	3,531,988
HAMPTON BAYS	8,022,311	3,517,806	3,596,120	(4,504,505)	(4,426,191)	78,314	43.9%	0.55	4,412,271	894,465
BRIGHTON	14,650,480	6,455,607	6,628,261	(8,194,873)	(8,022,219)	172,654	44.1%	0.55	8,057,764	1,602,157
UNIONDALE	64,034,519	28,746,593	30,281,017	(35,287,926)	(33,753,502)	1,534,424	44.9%	0.55	35,218,985	6,472,392
RYE NECK	2,663,312	1,253,922	1,266,461	(1,409,390)	(1,396,851)	12,539	47.1%	0.55	1,464,822	210,900
TARRYTOWN	12,643,710	5,959,725	6,119,957	(6,683,985)	(6,523,753)	160,232	47.1%	0.55	6,954,041	994,316
NANUET	9,202,573	4,395,149	4,515,867	(4,807,424)	(4,686,706)	120,718	47.8%	0.55	5,061,415	666,266
ELMSFORD	2,959,280	1,421,907	1,441,823	(1,537,373)	(1,517,457)	19,916	48.0%	0.55	1,627,604	205,697
NEW HYDE PARK	6,349,023	3,138,974	3,221,154	(3,210,049)	(3,127,869)	82,180	49.4%	0.55	3,491,963	352,989
GLEN COVE	13,850,286	6,863,254	7,037,200	(6,987,032)	(6,813,086)	173,946	49.6%	0.55	7,617,657	754,403
PORT WASHINGTON	8,913,055	4,459,618	4,504,214	(4,453,437)	(4,408,841)	44,596	50.0%	0.55	4,902,180	442,562
VALLEY STR UF	9,093,988	4,557,584	4,674,001	(4,536,404)	(4,419,987)	116,417	50.1%	0.55	5,001,693	444,109
GOSHEN	17,678,199	8,915,396	9,119,803	(8,762,803)	(8,558,396)	204,407	50.4%	0.55	9,723,009	807,613
VALLEY STR CHS	25,181,446	12,771,295	13,105,113	(12,410,151)	(12,076,333)	333,818	50.7%	0.55	13,849,795	1,078,500
HEWLETT WOODRIF	7,883,327	3,998,671	4,066,573	(3,884,656)	(3,816,754)	67,902	50.7%	0.55	4,335,830	337,159
HUNTINGTON	16,674,803	8,467,405	8,641,818	(8,207,398)	(8,032,985)	174,413	50.8%	0.55	9,171,142	703,737
WHITE PLAINS	24,724,454	12,793,160	13,003,971	(11,931,294)	(11,720,483)	210,811	51.7%	0.55	13,598,450	805,290
PELHAM	6,109,418	3,180,509	3,224,692	(2,928,909)	(2,884,726)	44,183	52.1%	0.55	3,360,180	179,671
SOMERS	8,530,330	4,445,548	4,532,566	(4,084,782)	(3,997,764)	87,018	52.1%	0.55	4,691,682	246,134
BUND BROOK-RY	2,457,385	1,283,097	1,295,927	(1,174,288)	(1,161,458)	12,830	52.2%	0.55	1,351,562	68,465
HEMPSTEAD	151,261,603	79,511,466	82,014,555	(71,750,137)	(69,247,048)	2,503,089	52.6%	0.55	83,193,882	3,682,416
HENDRICK HUDSON	6,670,580	3,523,413	3,581,877	(3,147,167)	(3,088,703)	58,464	52.8%	0.55	3,668,819	145,406
VALHALLA	4,137,071	2,210,621	2,247,377	(1,926,450)	(1,889,694)	36,756	53.4%	0.55	2,275,389	64,768
S. HUNTINGTON	35,729,327	19,107,133	19,740,419	(16,622,194)	(15,988,908)	633,286	53.5%	0.55	19,651,130	543,997
CHESTER	6,678,676	3,579,116	3,666,787	(3,099,560)	(3,011,889)	87,671	53.6%	0.55	3,673,272	94,156
BAY SHORE	51,515,661	27,664,280	28,557,645	(23,851,381)	(22,958,016)	893,365	53.7%	0.55	28,333,614	669,334
JAMESVILLE-DEW	11,709,094	6,378,393	6,520,275	(5,330,701)	(5,188,819)	141,882	54.5%	0.55	6,440,002	61,609
SEWANAKA	42,631,208	23,254,592	23,780,821	(19,376,616)	(18,850,387)	526,229	54.5%	0.55	23,447,164	192,572
										48,463,604