

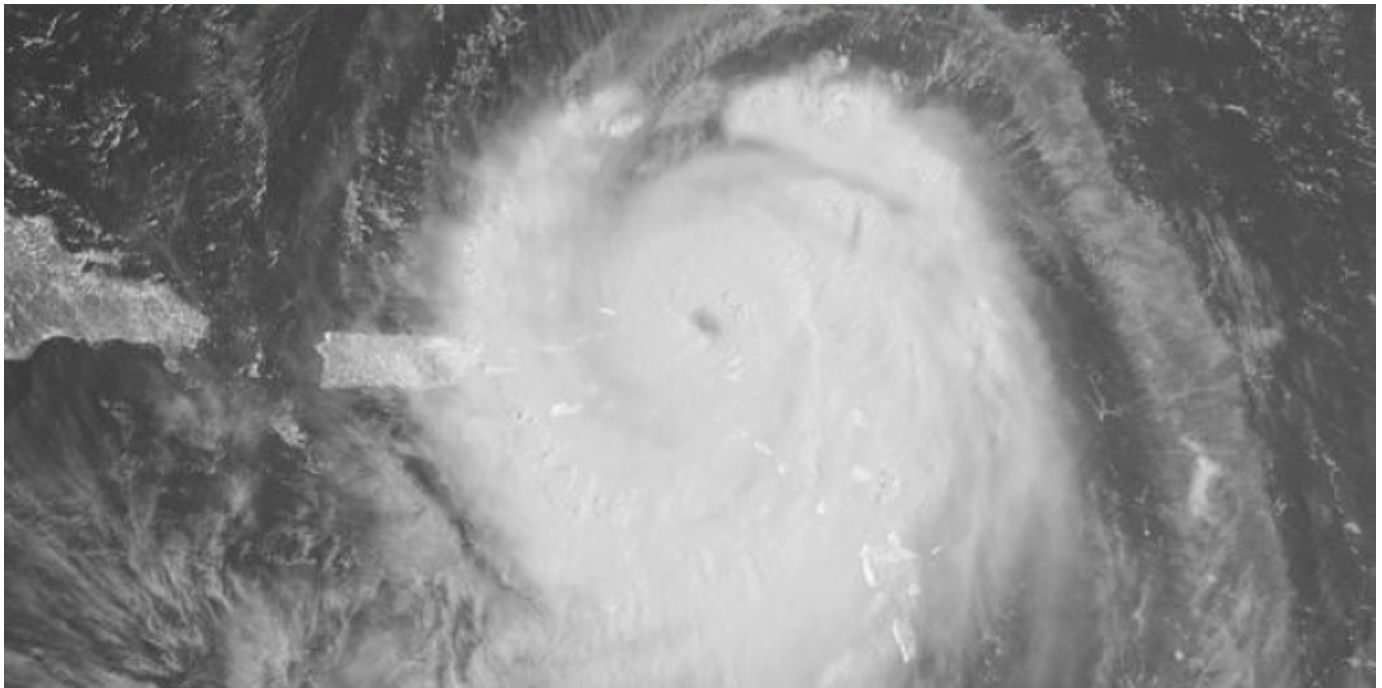


NEW YORK STATE SENATOR

Craig M. Johnson

Hurricane Earl Resource Center

CRAIG M. JOHNSON September 1, 2010



Hurricane Earl has begun to climb the East Coast, and it is slated to reach Long Island. As Long Islanders, we know full well the damage that a hurricane can bring upon our communities. It is important to be safe and be prepared. Below are some links on what to do and how to be prepared for an emergency situation.

National Hurricane Center

<http://www.nhc.noaa.gov/#EARL>

Nassau County Hurricane Shelters

<http://www.nassaucountyny.gov/Hurricane.htm>

Town of North Hempstead Safety Brochure

<http://www.northhempsteadny.gov/filestorage/7352/7123/5780/EmergencyBrochure.pdf>

Hurricane Earl Resources on NOAA

http://www.noaawatch.gov/2010/tc_at07.php

NYS State Emergency Management Office

<http://www.semo.state.ny.us/info/publicsafety/hurricaneprepare.cfm>